

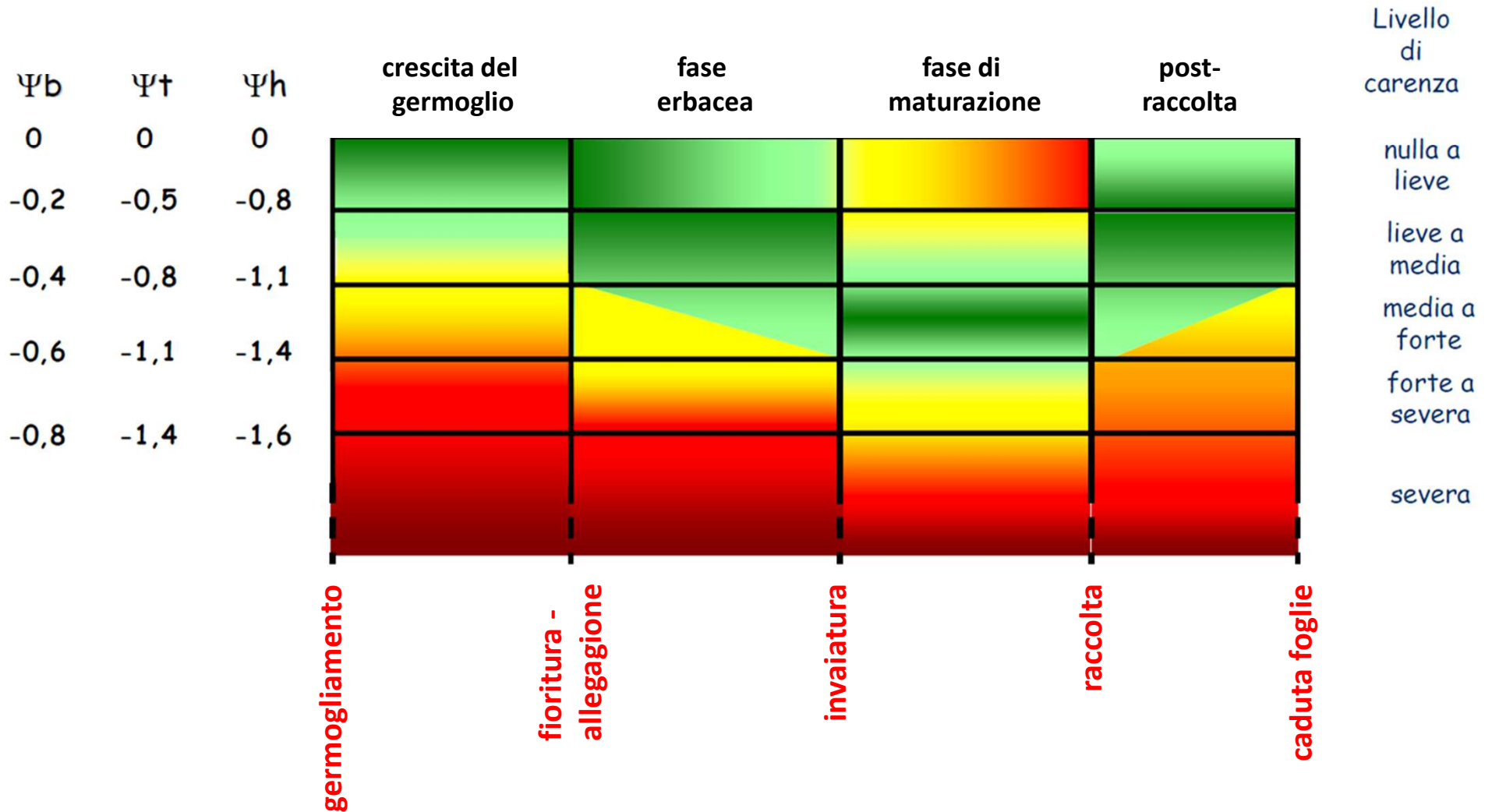


**UNIVERSITÀ  
DEGLI STUDI  
DI UDINE**

# **Rapporti tra deficit idrico, produzione e qualità delle uve nei Colli Orientali del Friuli (risultati sperimentali).**

**Dott. Paolo Sivilotti**

# potenziale idrico fogliare





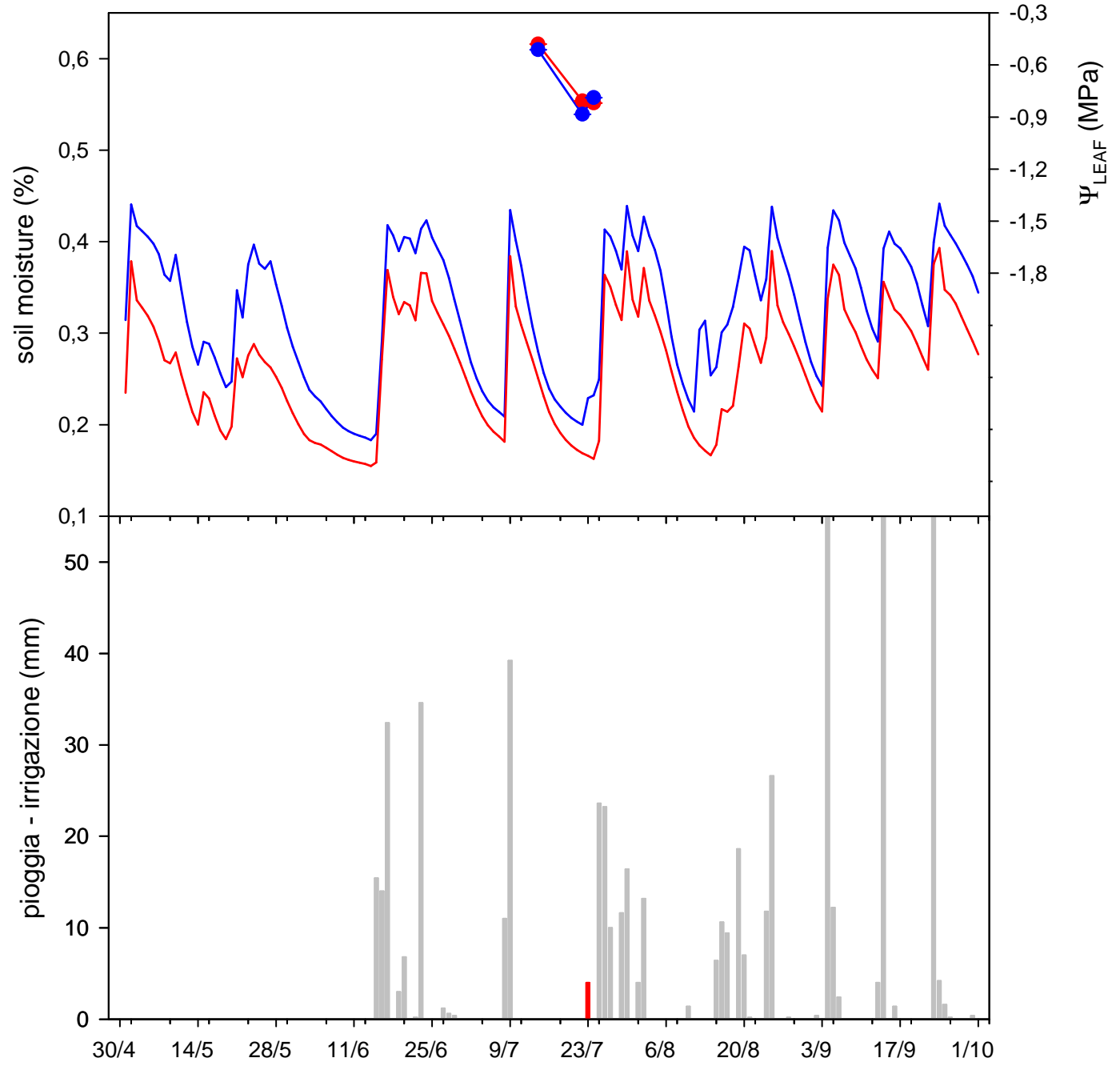
# Vigneti selezionati

- Merlot a Gramogliano – pianura
- Cabernet Sauvignon a Gramogliano oltre collina – terrazze
- Ribolla Gialla su terreno a scheletro a Villanova dello Judrio in piano

# Gramogliano – oltre collina Cabernet Sauvignon 2015

WW

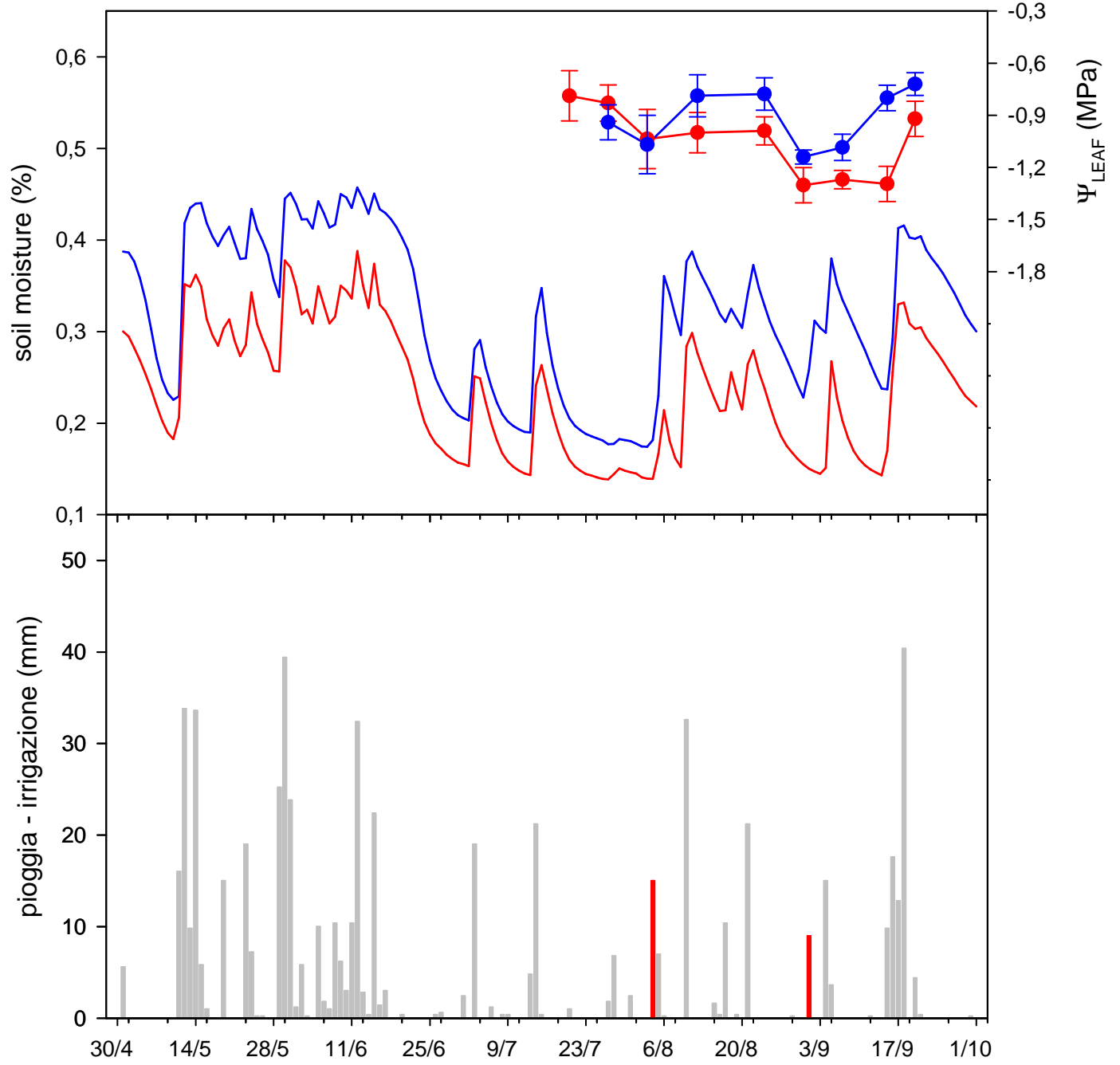
WS



# Gramogliano – oltre collina Cabernet Sauvignon 2016

WW

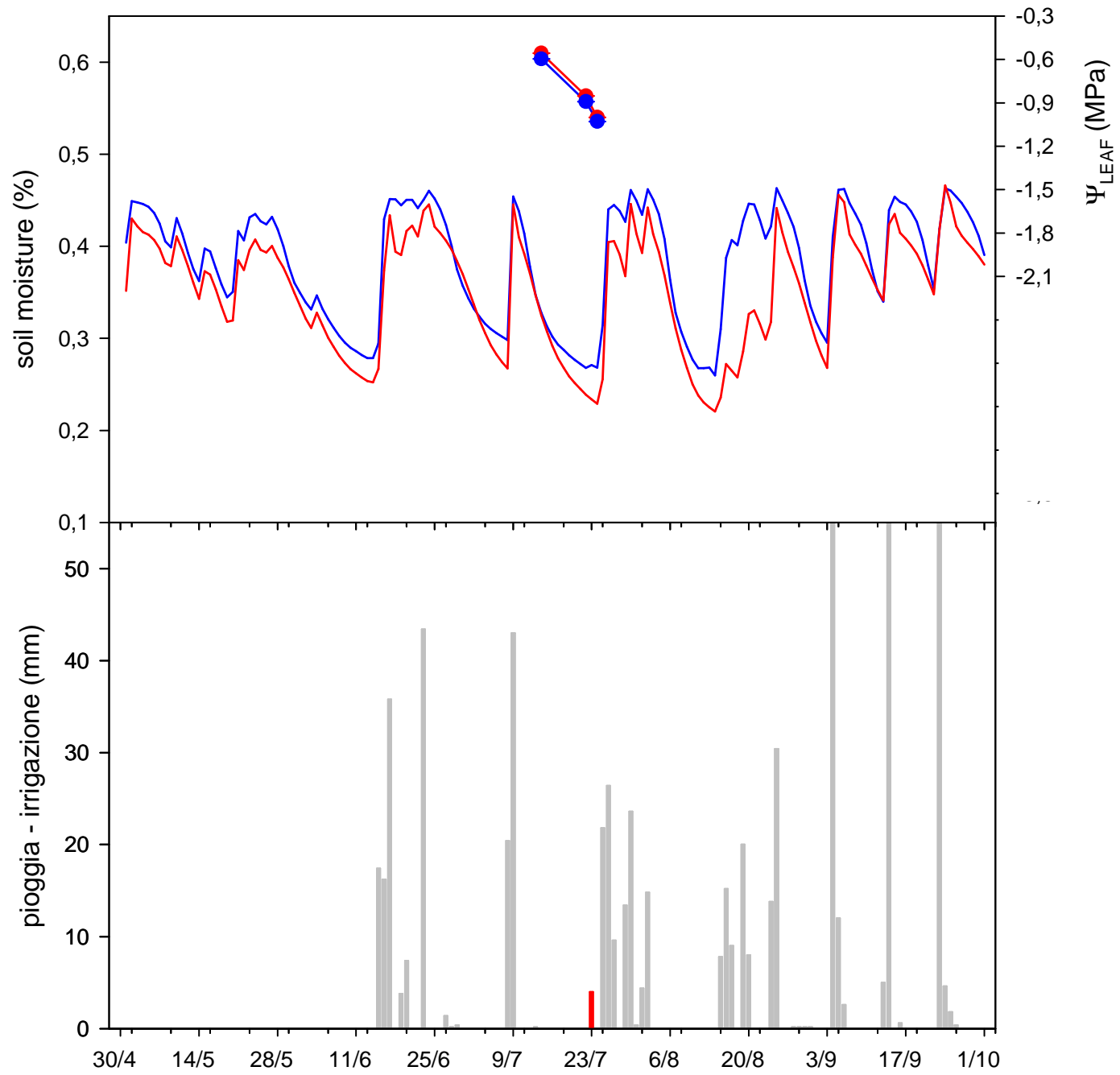
WS



# Gramogliano - pianura Merlot 2015

WW

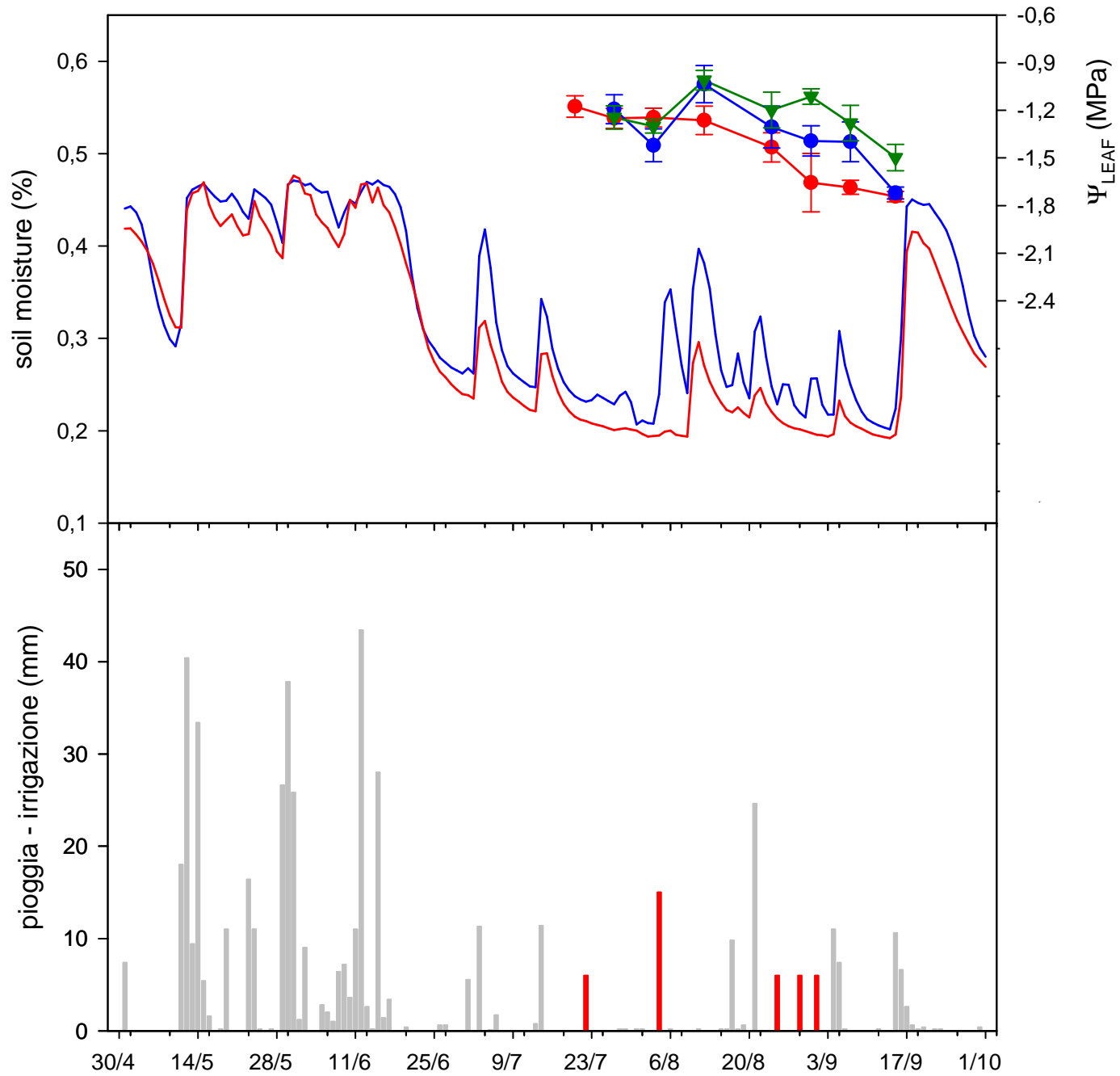
WS



# Gramogliano - pianura Merlot 2016

WW

WS





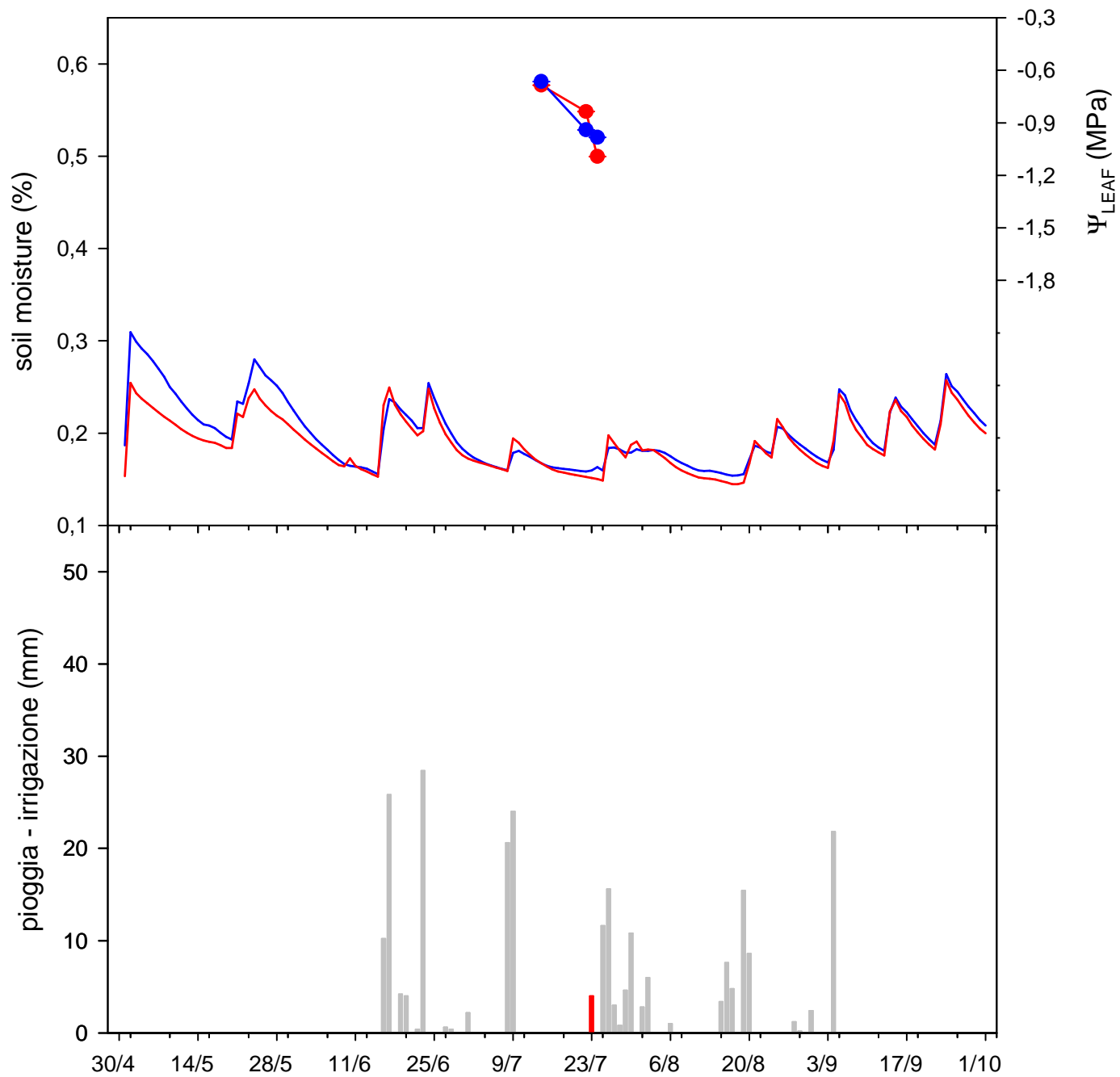




# Villanova dello Judrio Ribolla Gialla 2015

WW

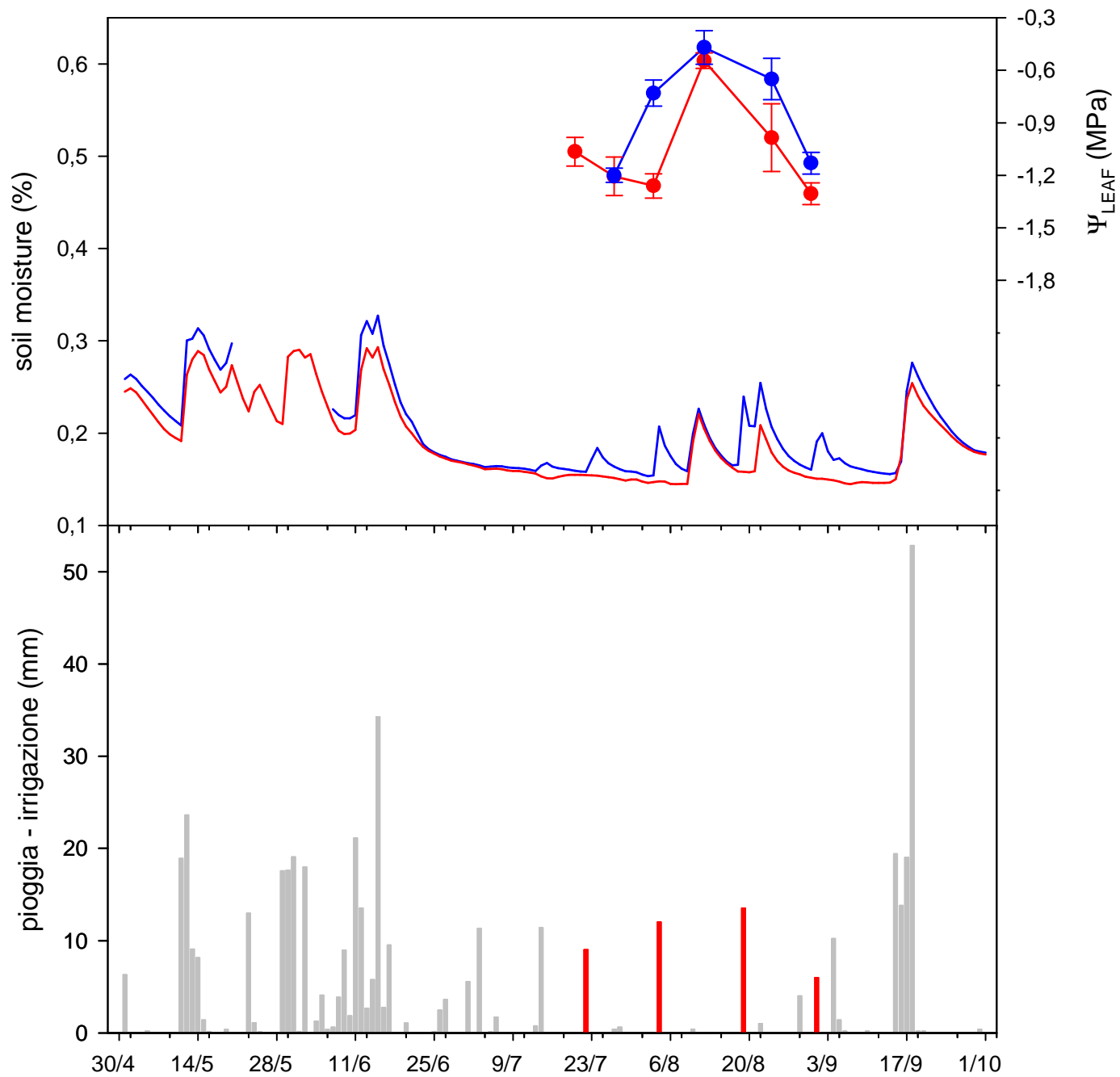
WS



# Villanova dello Judrio Ribolla Gialla 2016

WW

WS



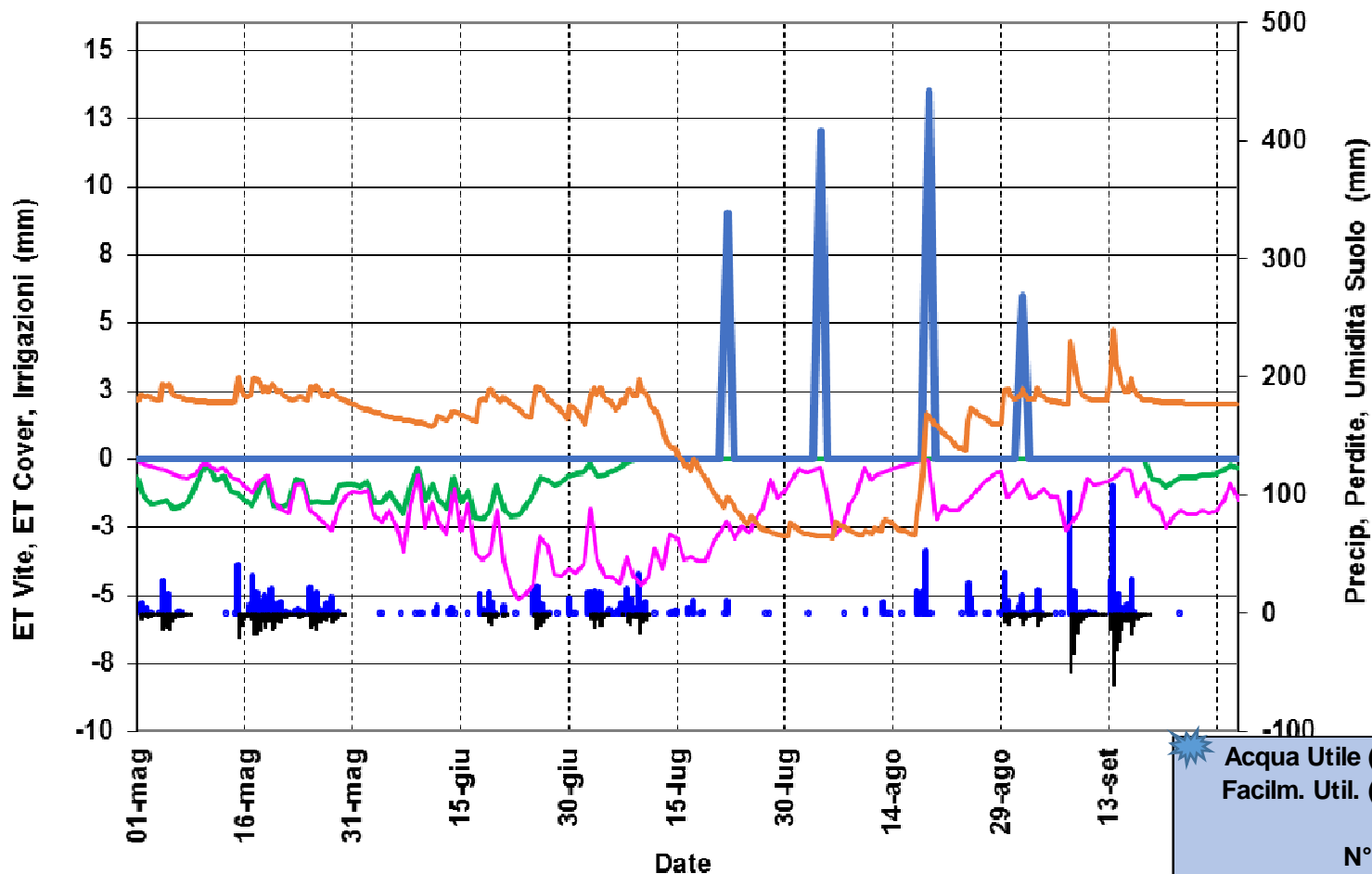




# Az. Butussi 2016. irrigazioni EFFETTIVE



Soil & Crop Water Balance



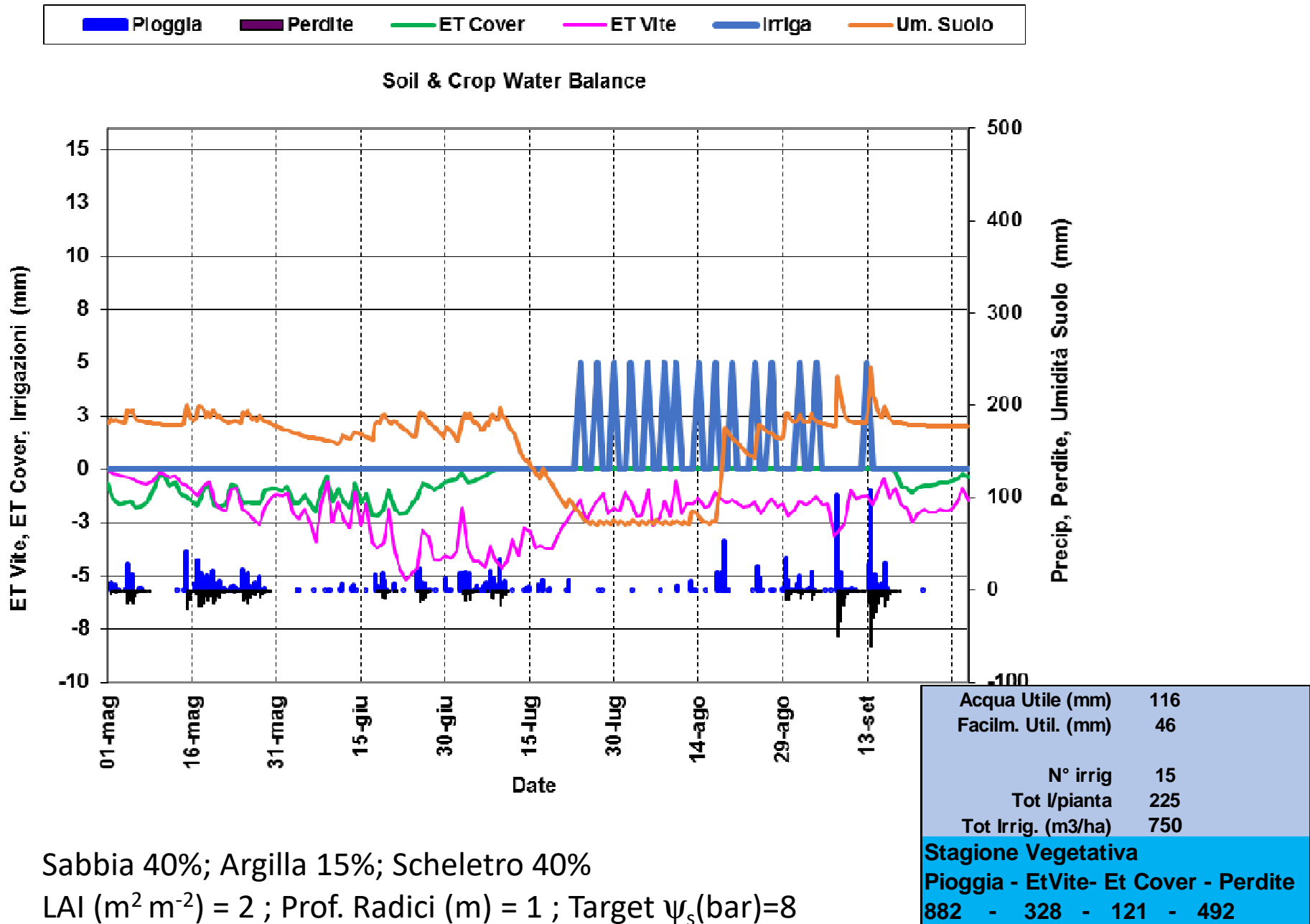
Acqua Utile (mm)	116
Facilm. Util. (mm)	46
N° irrig	4
Tot l/pianta	122
Tot Irrig. (m3/ha)	405
<b>Stagione Vegetativa</b>	
<b>Pioggia - EtVite- Et Cover - Perdite</b>	<b>882 - 300 - 120 - 488</b>

Sabbia 40%; Argilla 15%; Scheletro 40%

LAI (m<sup>2</sup> m<sup>-2</sup>) = 2 ; Prof. Radici (m) = 1 ; Target  $\psi_s$ (bar)=8



# Az. Butussi 2016. irrigazioni SIMULATE

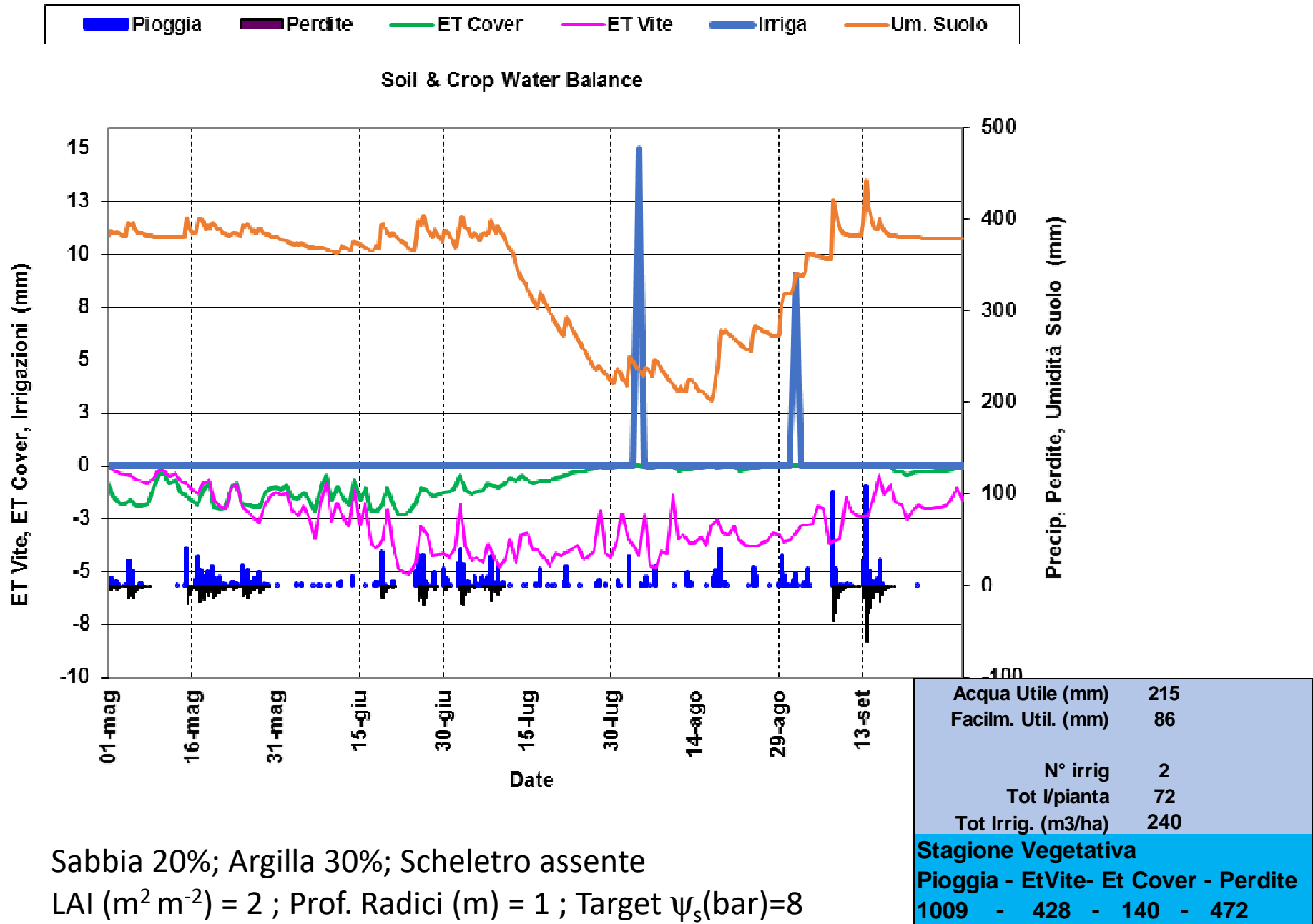


Sabbia 40%; Argilla 15%; Scheletro 40%

LAI (m<sup>2</sup> m<sup>-2</sup>) = 2 ; Prof. Radici (m) = 1 ; Target  $\psi_s$ (bar)=8

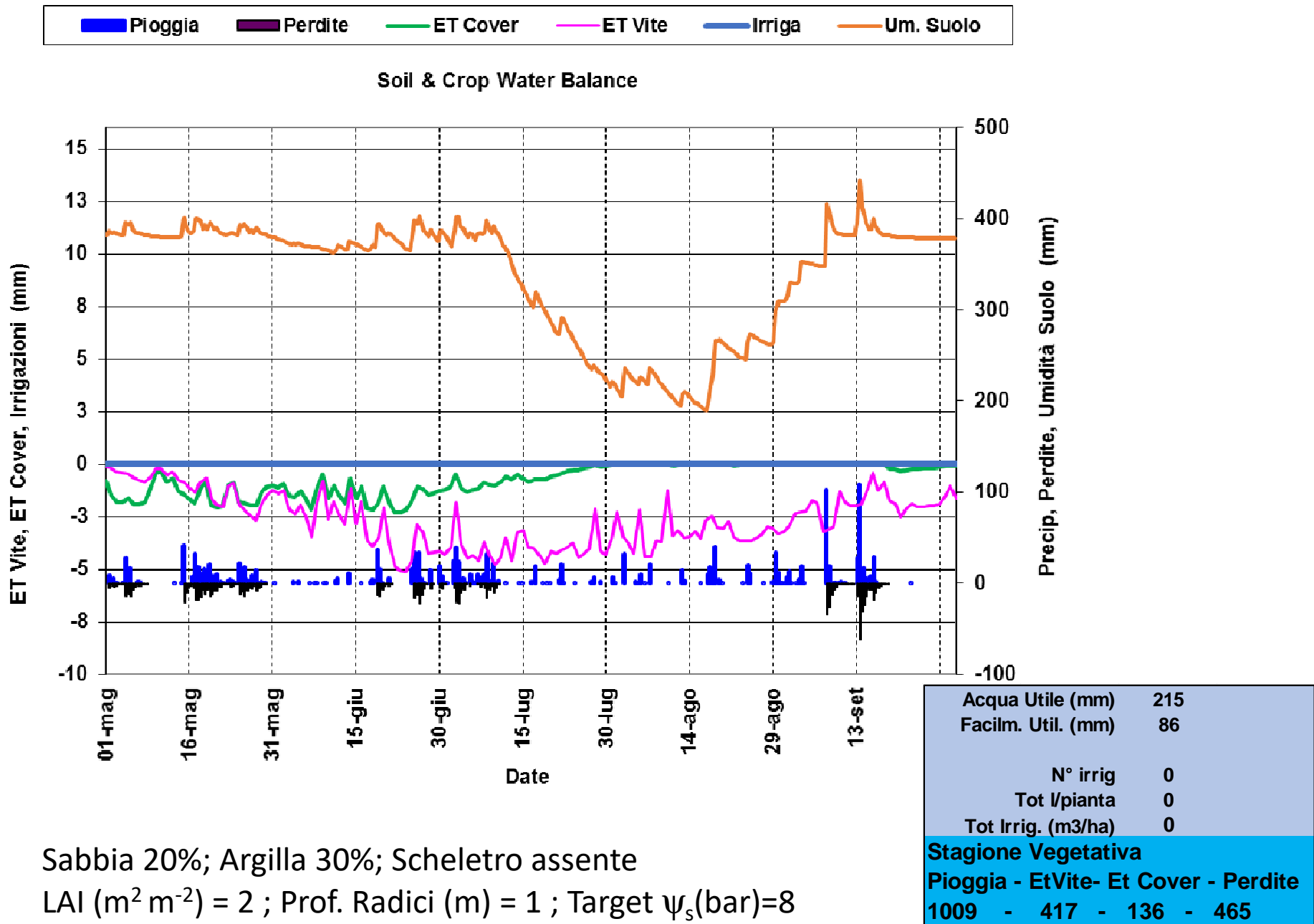


# Az. Perusini 2016. irrigazioni EFFETTIVE



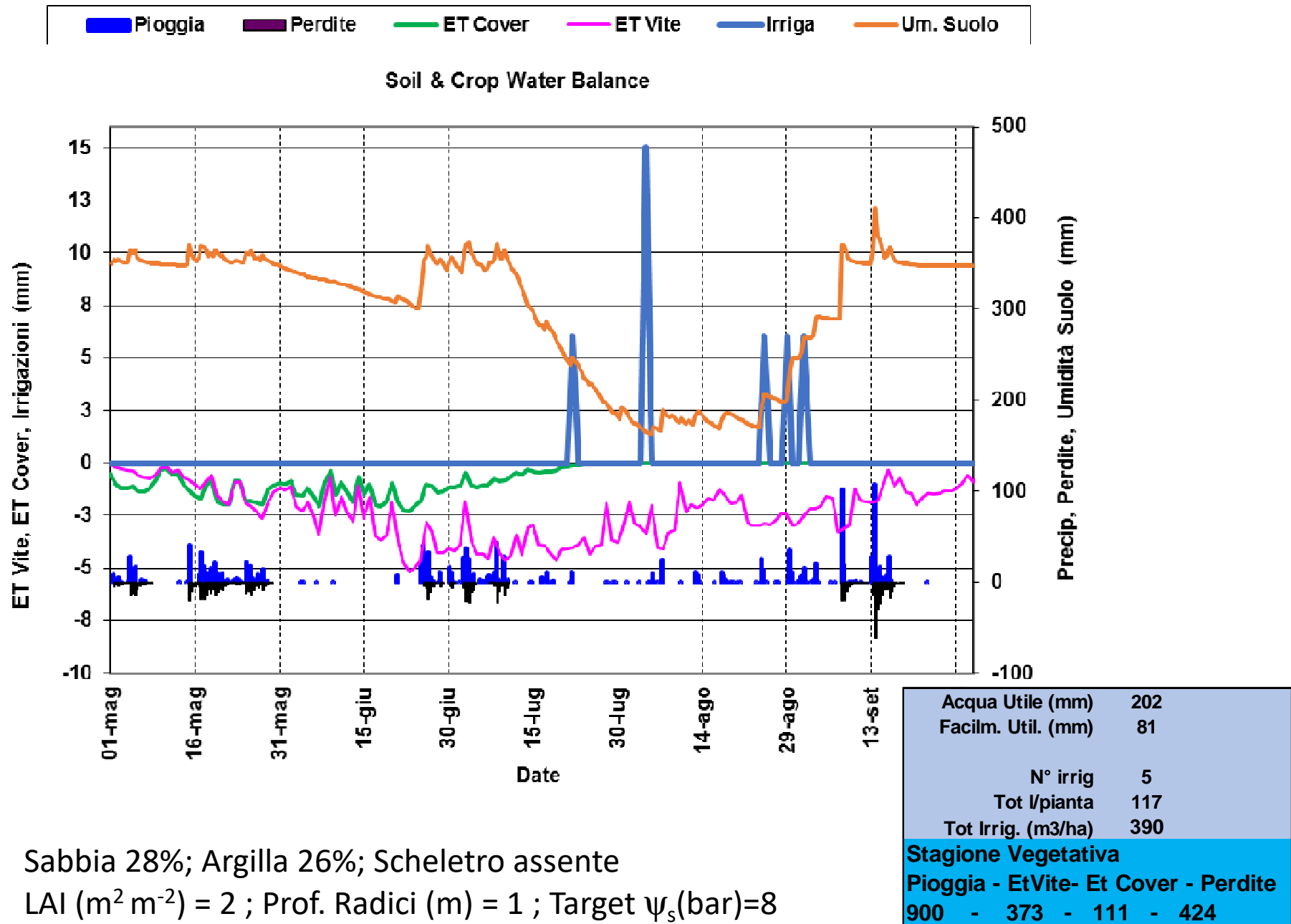
Sabbia 20%; Argilla 30%; Scheletro assente  
 LAI (m<sup>2</sup> m<sup>-2</sup>) = 2 ; Prof. Radici (m) = 1 ; Target  $\psi_s$ (bar)=8

# Az. Perusini 2016. irrigazioni **SIMULATE**



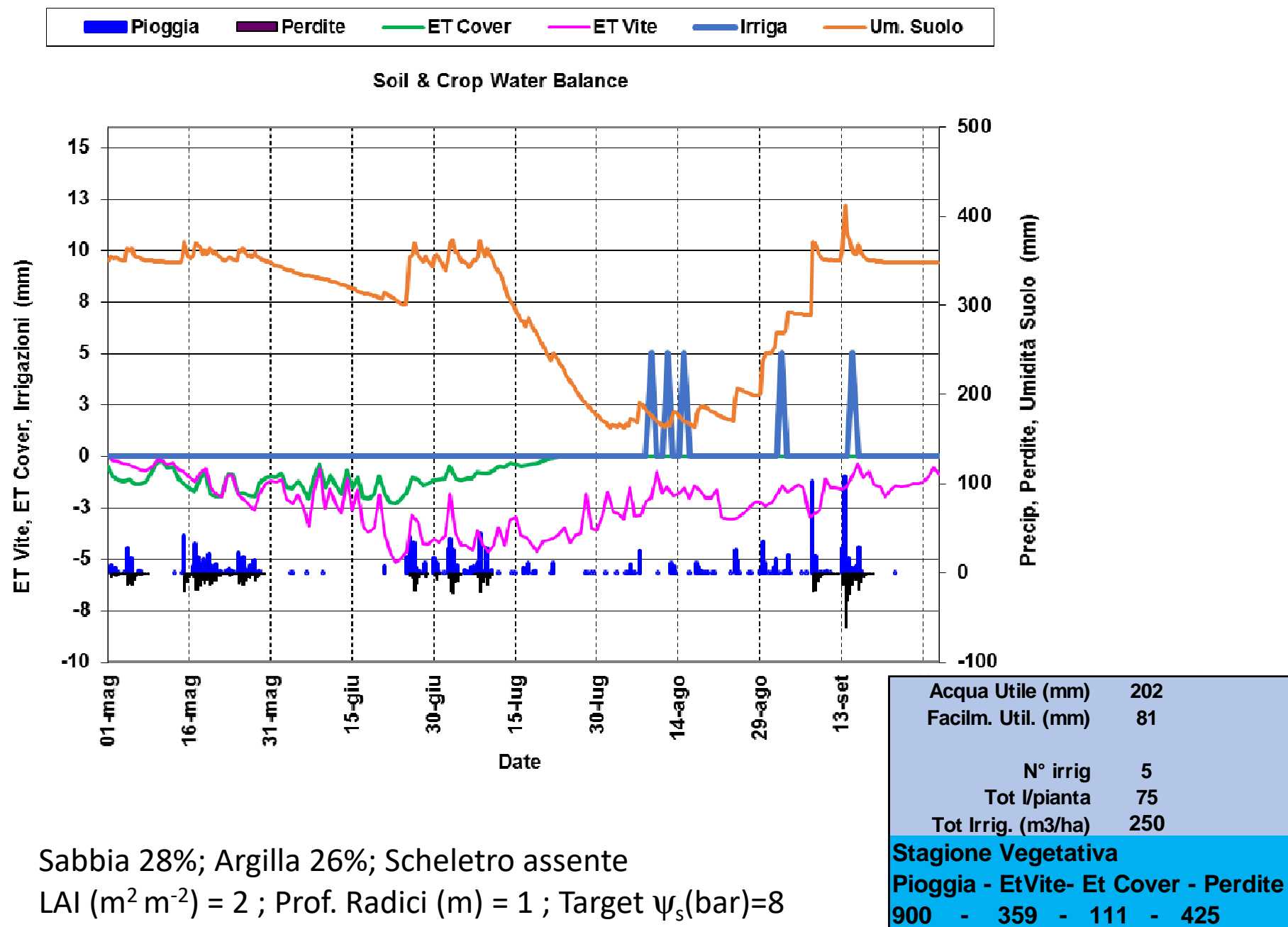
Sabbia 20%; Argilla 30%; Scheletro assente  
 LAI (m<sup>2</sup> m<sup>-2</sup>) = 2 ; Prof. Radici (m) = 1 ; Target  $\psi_s$ (bar)=8

## Az. Visintini 2016. irrigazioni **EFFETTIVE**



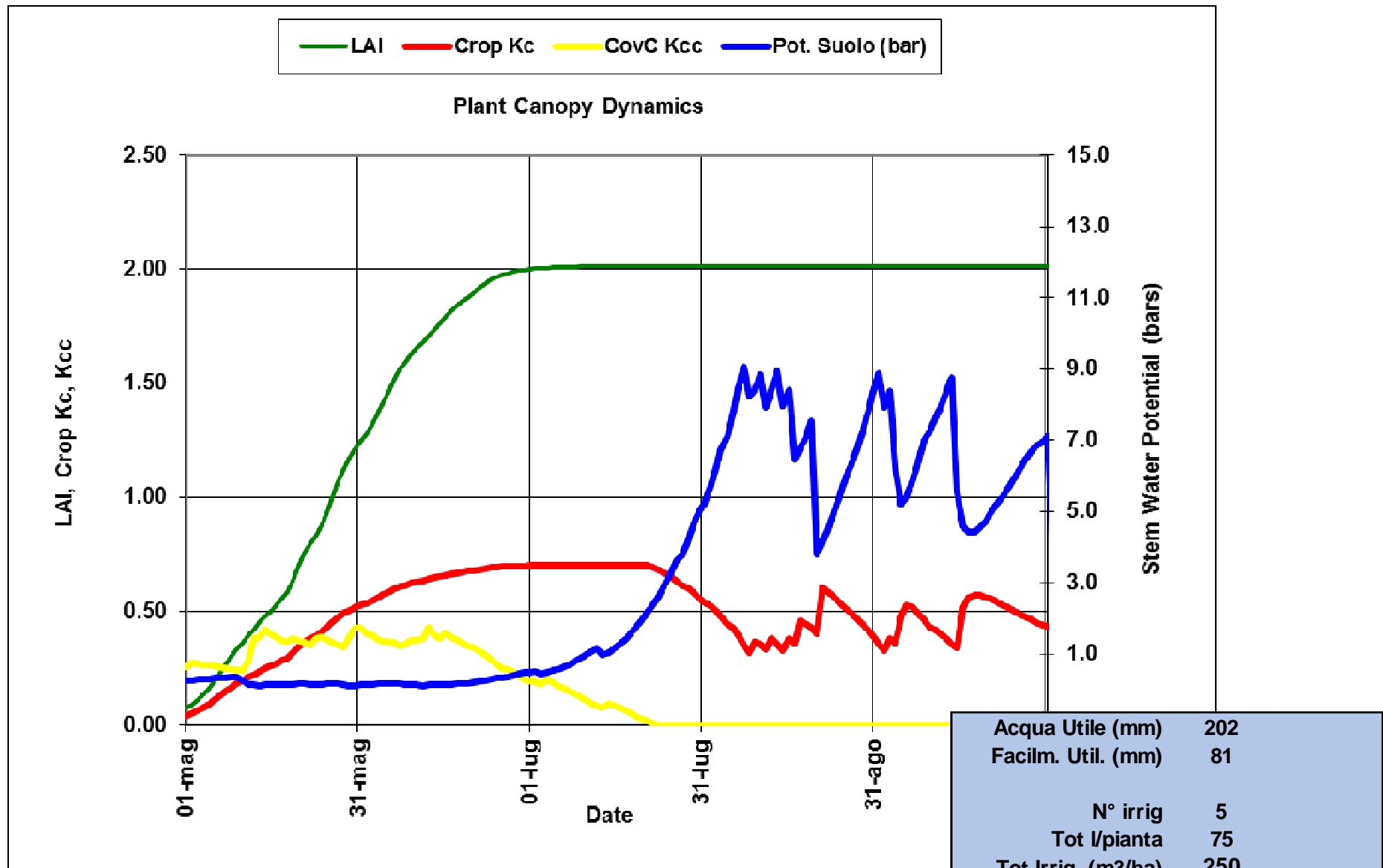
Sabbia 28%; Argilla 26%; Scheletro assente  
 LAI (m<sup>2</sup> m<sup>-2</sup>) = 2 ; Prof. Radici (m) = 1 ; Target  $\psi_s$ (bar)=8

# Az. Visintini 2016. irrigazioni SIMULATE



Sabbia 28%; Argilla 26%; Scheletro assente  
 LAI (m<sup>2</sup> m<sup>-2</sup>) = 2 ; Prof. Radici (m) = 1 ; Target  $\psi_s$ (bar)=8

## Az. Visintini 2016. irrigazioni **SIMULATE** – Potenziale Idrico Suolo

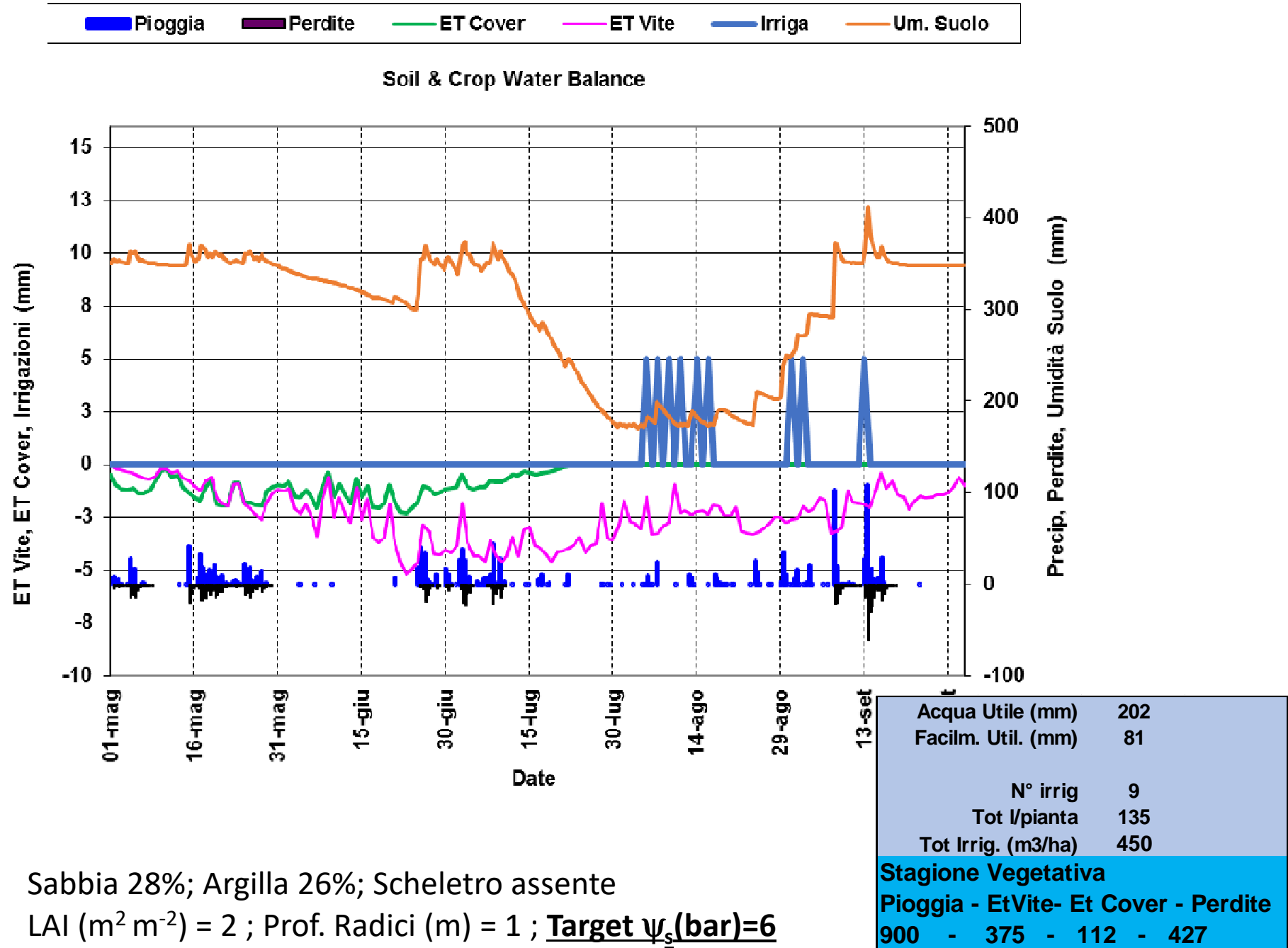


Acqua Utile (mm)	202
Facilm. Util. (mm)	81
N° irrig	5
Tot l/pianta	75
Tot Irrig. (m3/ha)	250

<b>Stagione Vegetativa</b>			
<b>Pioggia</b>	<b>- EtVite-</b>	<b>Et Cover</b>	<b>- Perdite</b>
900	- 359	- 111	- 425

Sabbia 28%; Argilla 26%; Scheletro assente  
 LAI (m<sup>2</sup> m<sup>-2</sup>) = 2 ; Prof. Radici (m) = 1 ; Target  $\psi_s$ (bar)=8

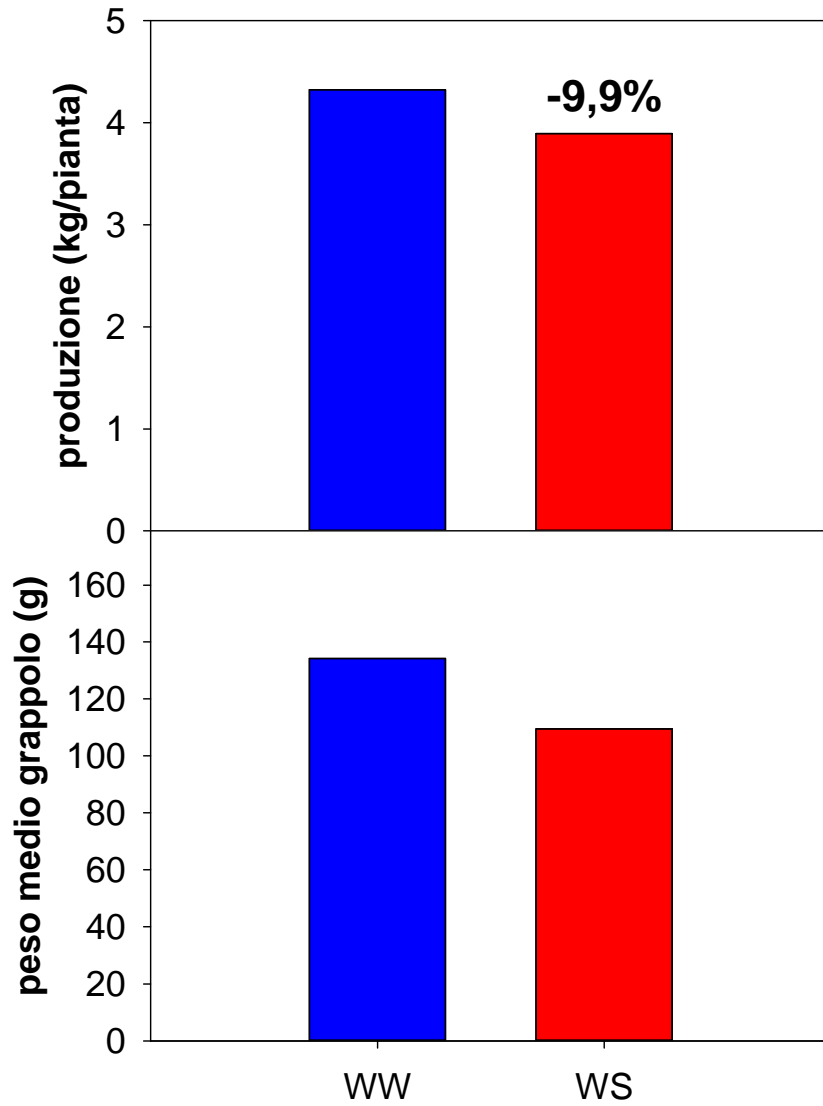
## Az. Visintini 2016. irrigazioni SIMULATE – Target a 6 bar



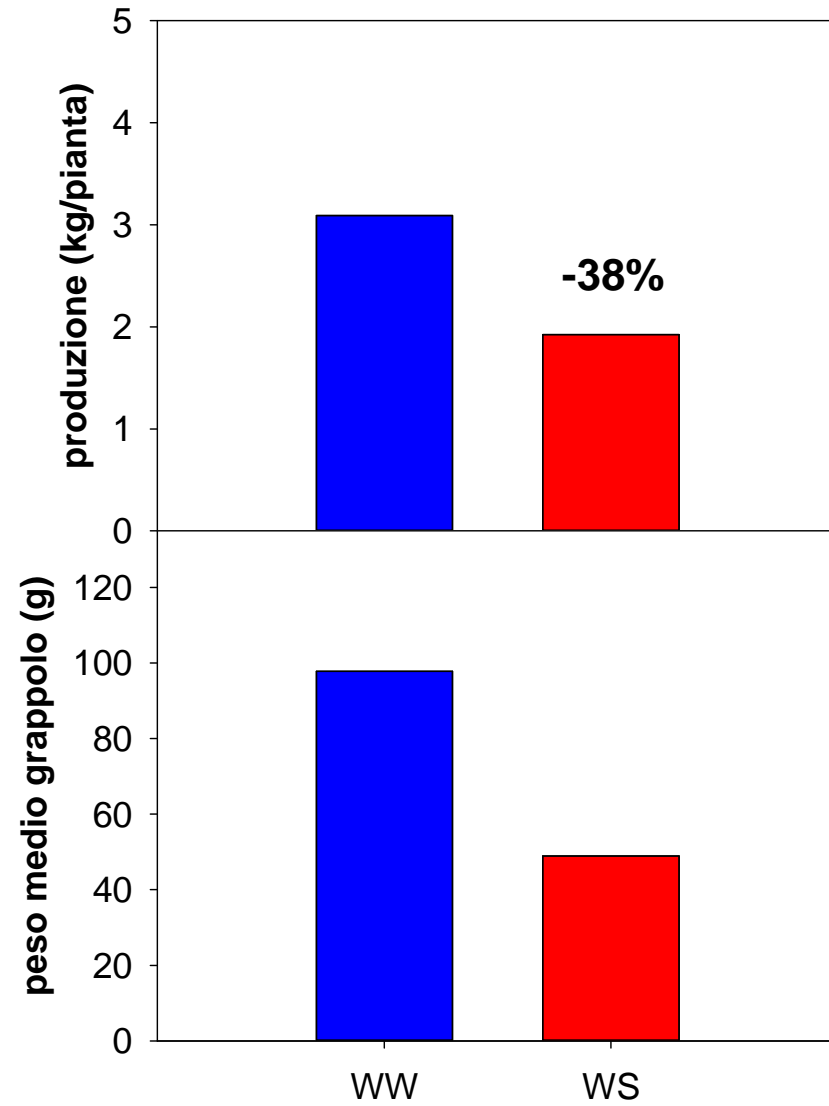
Sabbia 28%; Argilla 26%; Scheletro assente

LAI (m<sup>2</sup> m<sup>-2</sup>) = 2 ; Prof. Radici (m) = 1 ; **Target  $\psi_s$  (bar)=6**

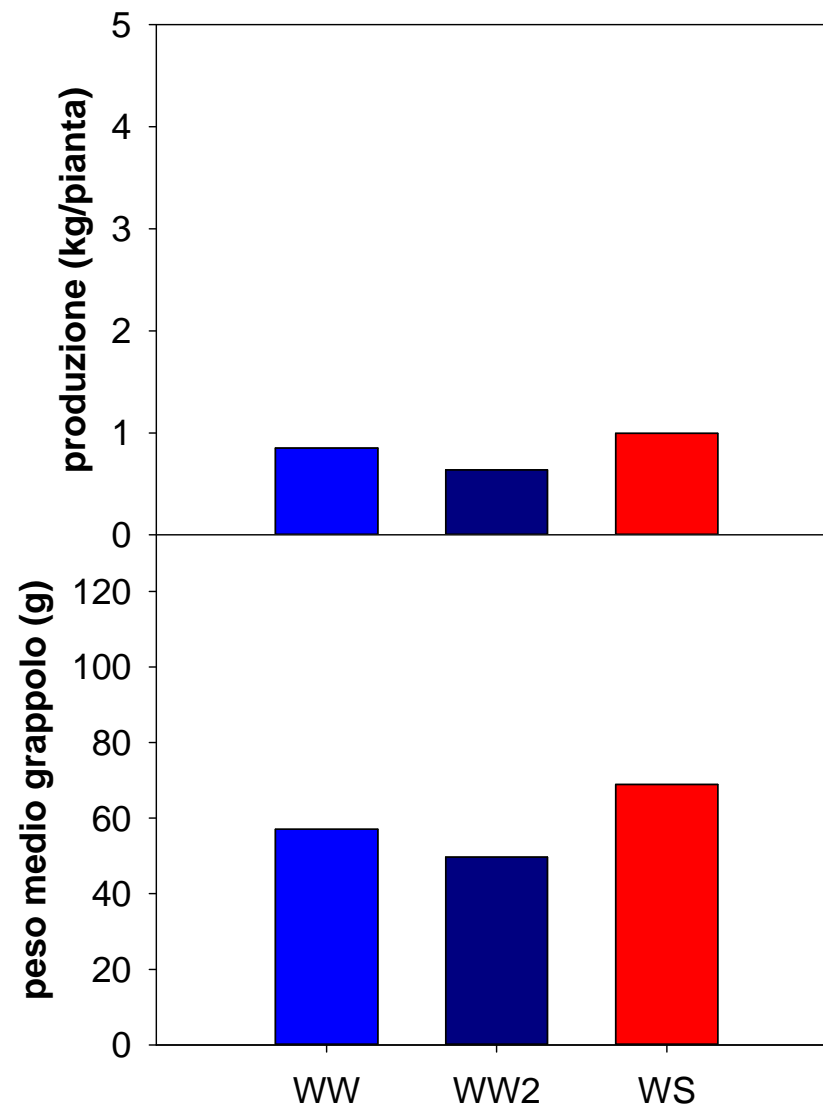
### Gramogliano – oltre collina Cabernet Sauvignon 2016



### Villanova dello Judrio Ribolla Gialla 2016

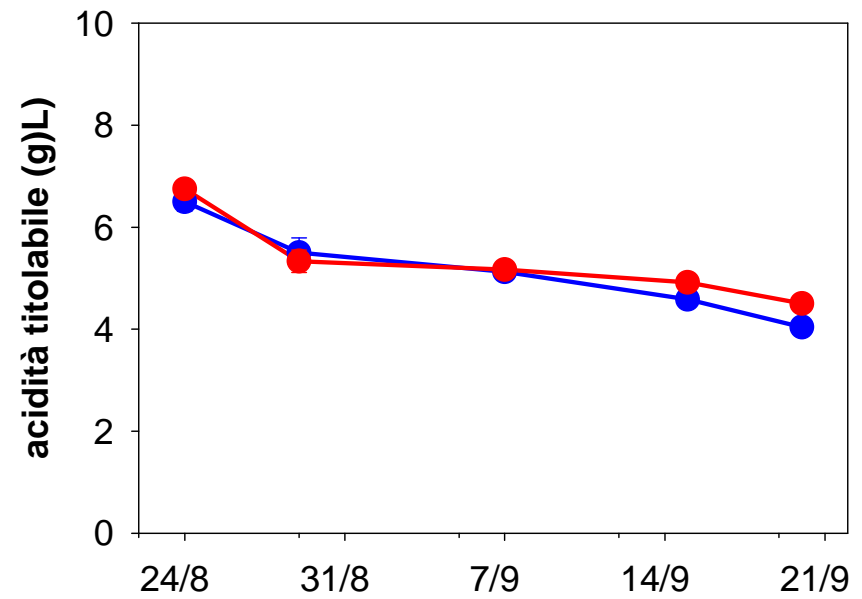
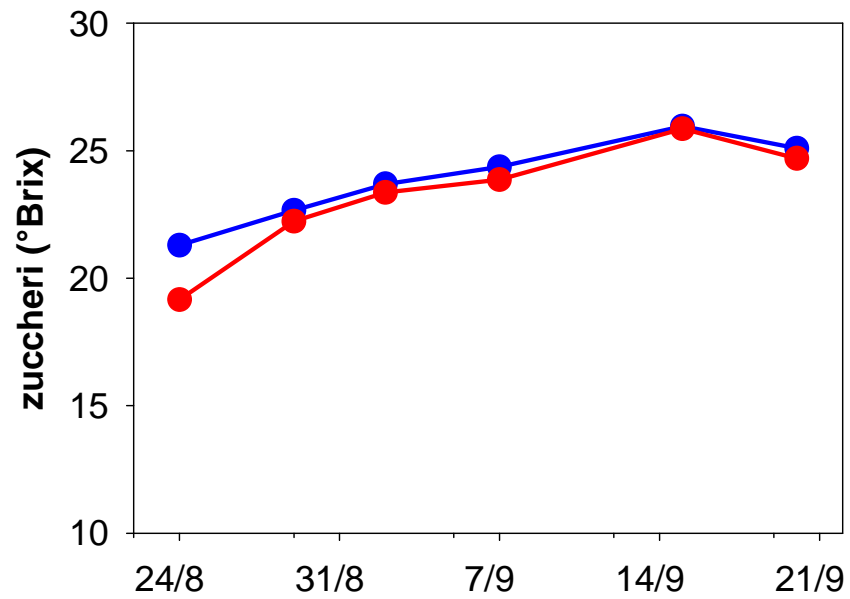
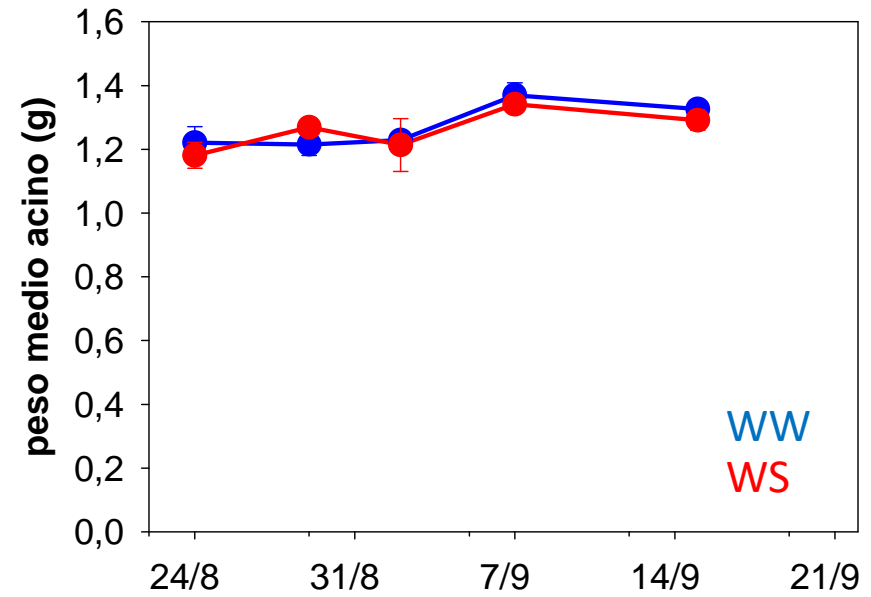


# Gramogliano - pianura Merlot 2016

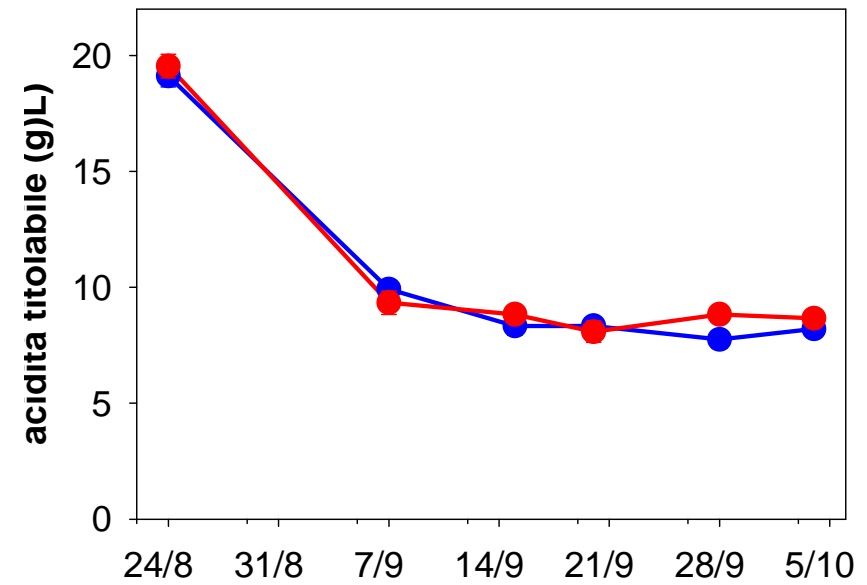
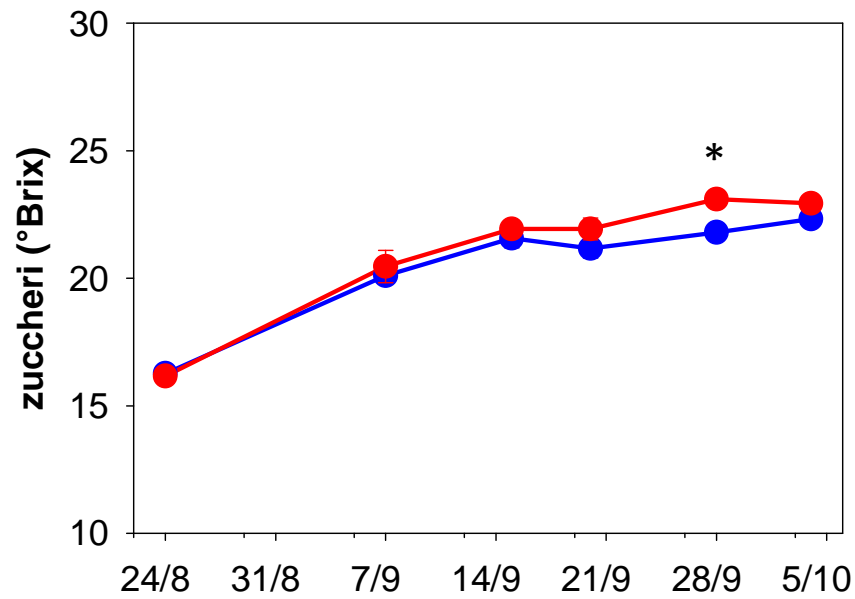
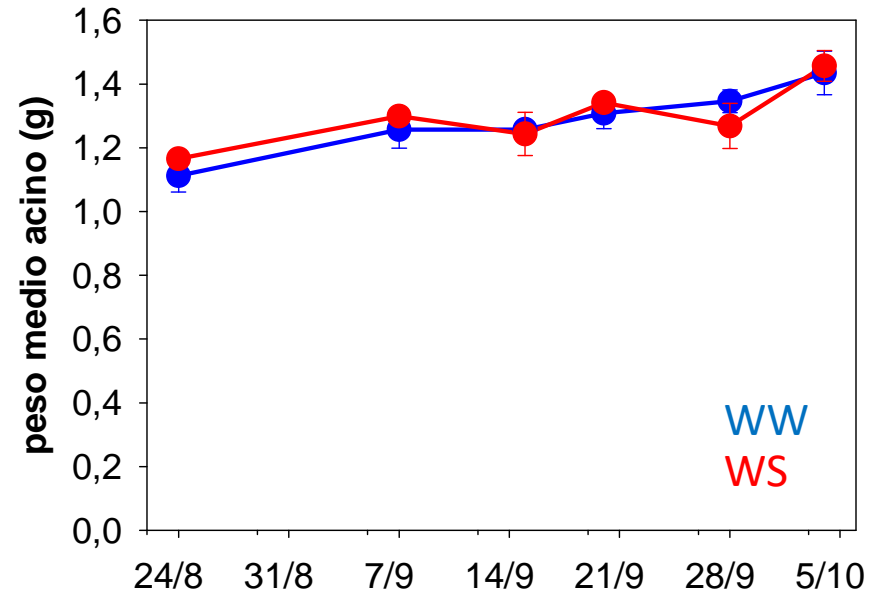




# Gramogliano – pianura Merlot

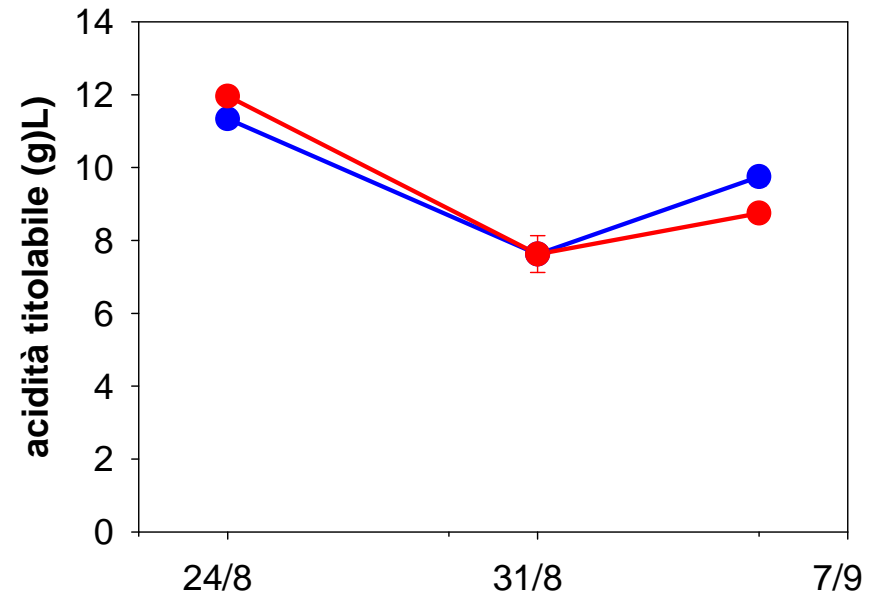
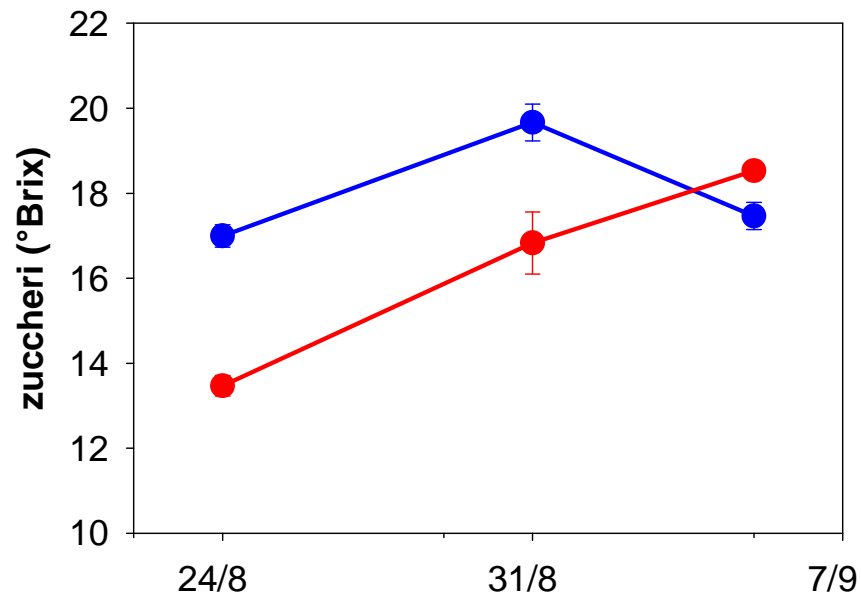
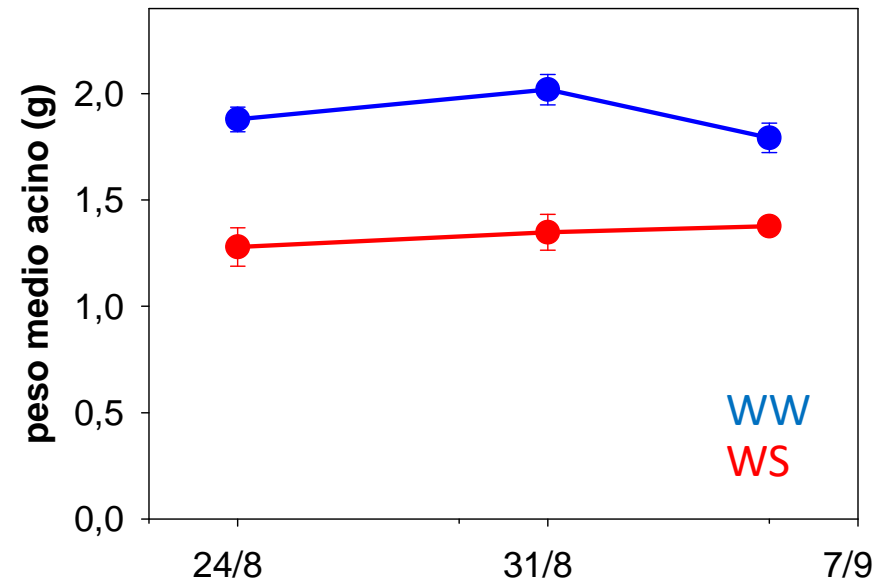


# Gramogliano – oltre collina Cabernet Sauvignon



# Villanova dello Judrio

## Ribolla Gialla



# Work in progress

- Analisi della componente fenolica delle uve
- Analisi metabolomica (prof. Aaron Fait)

# Ringraziamenti

- Consorzio di Bonifica Pianura Friulana
- Aziende ospitanti: Butussi, Visintini, Perusini
- Dott. Carlos Herrera, Sangoi Agnese
- Dott. Gemini Delle Vedove